



## GPD60(A) GPD60 (B) Pressure Transmitter

### Description

This product is suitable for a coal mine methane gas mixture and the risk of coal dust explosion. No oil, isolated sensor structure greatly improves the product overload and impact resistance, so that the stability of the product is better, and longer life. Superb all-welded packaging technology and improve the assembly process to ensure high quality and excellent performance of the transmitter, is a specialized pressure transmitter design supporting in coal mining equipment.

### Applications

Pressure detection for hydraulic support of coal mine, scraper conveyor equipment, etc.

Emulsion pump pressure mine, level monitoring;

Pressure measurement integrated detection system of coal mine;

### Features:

- ◆ 3 times Performance guarantee pressure, 5 times Burst Pressure
- ◆ Meet the 500VDC insulation and 500VAC voltage requirements
- ◆ All stainless steel structure, firm and reliable, strong impact resistance, anti falls the seismic
- ◆ IP67 Protection grade
- ◆ The product has the security certification



### Specifications:

**GPD60(A)** Intrinsically safe parameters:  $U_i$ : 12.5V;  $I_i$ : 15mA;  $C_i$ : 0uF;  $L_i$ : 0mH

**GPD60(B)** Intrinsically safe parameters:  $U_i$ : 12.5V;  $I_i$ : 10mA;  $C_i$ : 0uF;  $L_i$ : 0mH

Pressure Range: 0~60MPa

Supply Voltage: 12VDC (12.28VDC)

Output Voltage: GPD60(A)为4.20mA; GPD60(B)为0.5VDC (Optional)

Operating Current:  $\leq 10$ mA DC (GPD60(B))

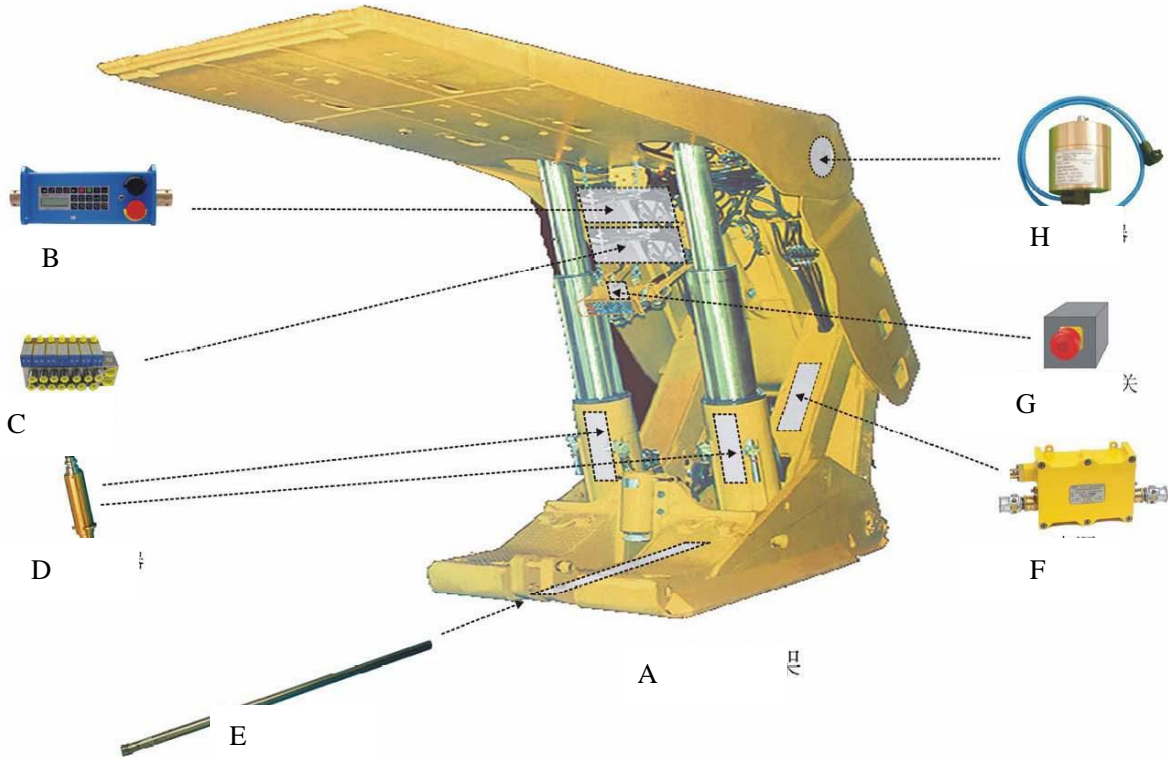
Error in normal temperature:  $\pm 1\%$ FS

### Application Description:

As shown, the pressure transmitter is mainly pillar installed in hydraulic support, monitor the working face



hydraulic support upright post subarachnoid pressure;

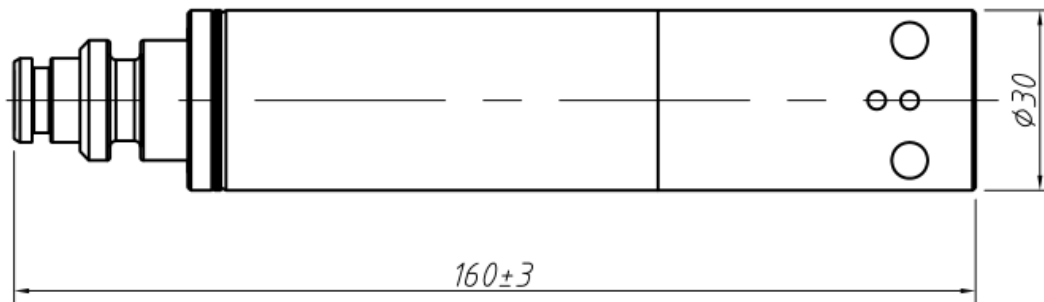


A- Hydraulic support; B- Controller; C- Hydraulic valve group; D- Pressure Sensor; E- Displacement sensor; F- Power supply; G- External emergency stop switch; H- Angle sensors

**Ordering Information:** Current type: GPD60(A); Voltage type: GPD60(B)

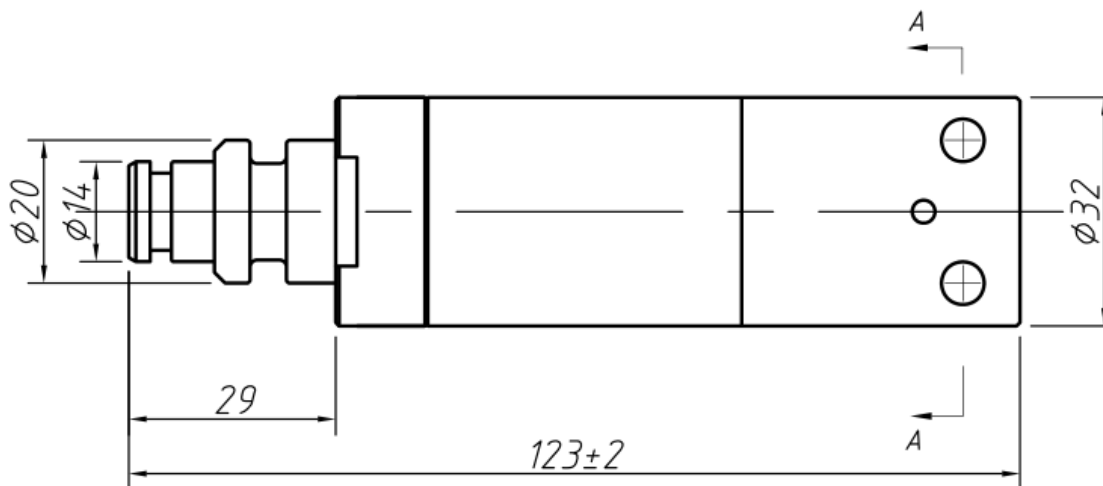
**Product Diagram:**

GPD60(A) :

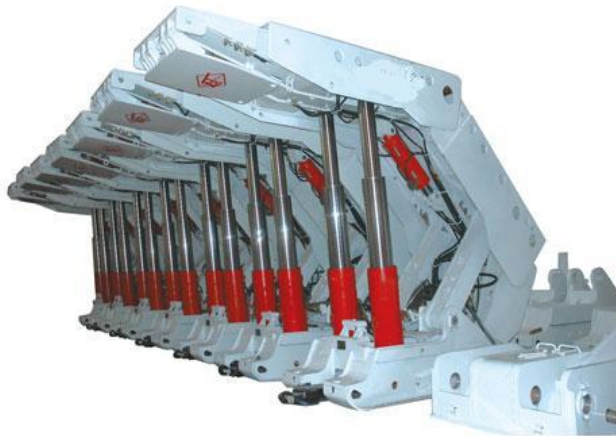




GPD60 (B) :



**Application picture:**



Hydraulic support



Boring Machine

**Gross Weight:** 480g

**Net Weight:** 430g

Xinhui KangYu Control Systems Engineering, Inc.

Guifeng Hightech Village, Ximen Rd., Xinhui District, Jiangmen City, Guangdong 529100, P.R. China

Tel: 86-750-6318857 Fax: 86-750-6318900 E-mail: [sale@chinakangyu.com](mailto:sale@chinakangyu.com) Website: [www.chinakangyu.com](http://www.chinakangyu.com)